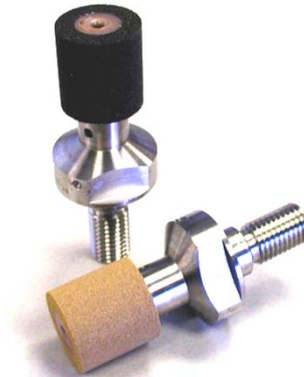
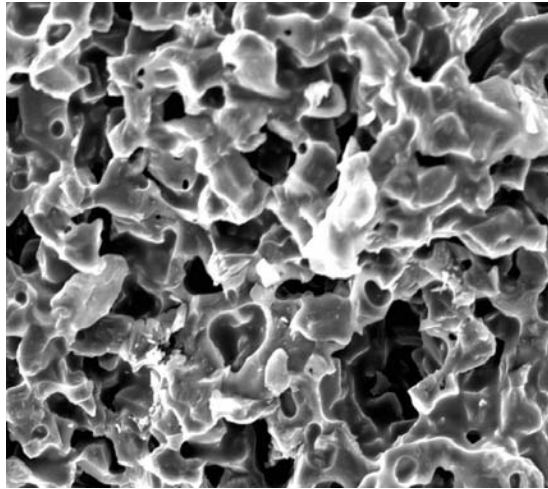


HPC (High Performance Cutting)



Specialty Solution For Vitrified CBN Internal Grinding Applications

Requiring Maximum Wheel Porosity

FEATURES:

- Highest porosity % available in any Vitrified Bond Structure
- Can be used in conjunction with standard or HPB vit bondings
- Available in mesh sizes 80 - 1200

IDEAL APPLICATIONS:

- blind-end bore grinding such as lash adjusters and tappets
- deep bore grinding with limited coolant access
- fuel injection bore/seat grinding
- fine-mesh / super-finishing applications where more porosity is needed

